

ODD SOCK'S INSTRUCTIONS



Not sure about your house, but this is a project I have been meaning to make for a long time.

Now all our Odd Socks have a home (and the Girls have a new money making scheme -pairing them)

The Design set includes the Odd Socks Applique design (5X7 Hoop required), together with instructions to create the simple Pull String Tote.

Finished Size:

Applique Patch – Just under 5x7 inches

Bag – Width 13 inches – Height 17 inches (You can make bag any size)


(I 'made' the Bag first, then added the Applique before sewing the bag together, so I'll start my instructions with the bag. If you are just appliqueing the design to another project or fabric, scroll down for instructions.)

Kreative Kiwi Embroidery Ltd holds the copyright to all embroidery designs and instructions on this website. These digitized embroidery designs are protected under International Copyright Law & Treaties. The designs and files cannot be sold, duplicated or shared in any way and are for use by the original purchaser/user only. You may not lend, give or sell the files to anyone else ever. You may not change, add to, delete parts of, or alter files and then call them your own.

MATERIALS

- Main Fabric – White – 14 inch by 30 inch
- Contrast Fabric – Green – 7 inch by 30 inch
- Applique Patch – 6x8 inch Panel
- Scraps of Fabric for Socks
- Pellon/Thin Batting – 6x8 inch Panel
- Cord

CONSTRUCTION

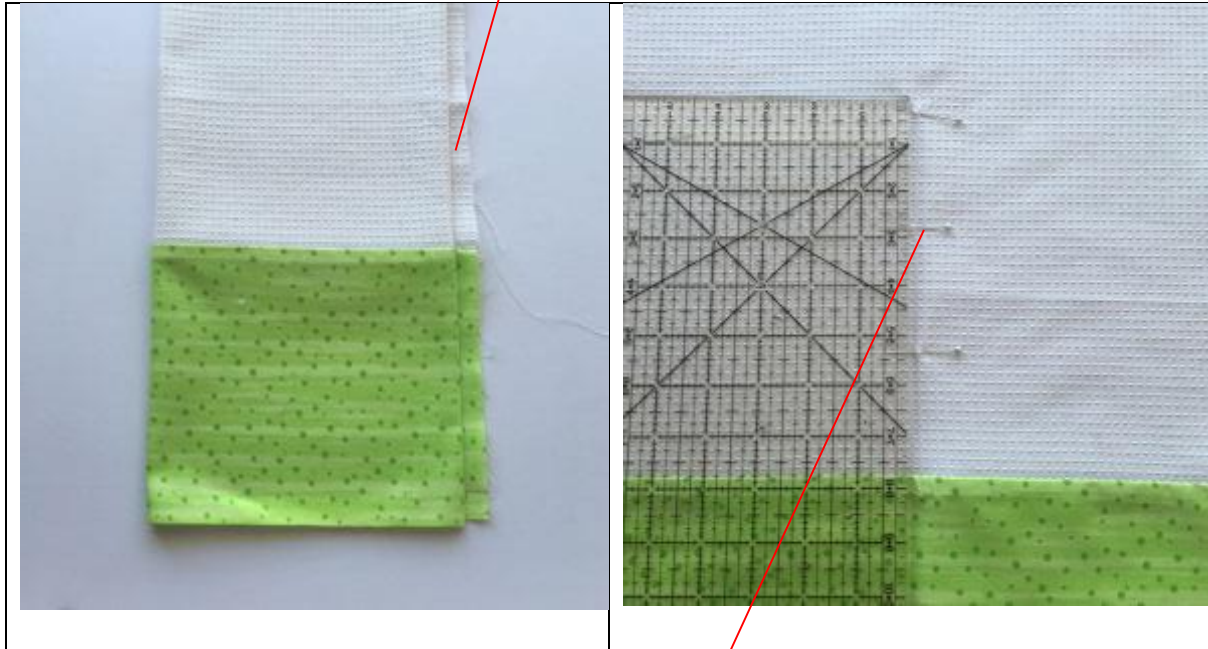
	<p>(Panel is folded in half in this photo)</p> <p>Top Edge – White Fabric</p> <p>Neaten the top 'long edge' By folding a 1/4 seam towards wrong side, pin and stitch</p> <p>Place your Contrast Fabric to the bottom with right sides together.</p> <p>Pin, then stitch ¼ inch</p>
------------------------------------------------------------------------------------	------------------------------------------------------------------------------------------------------------------------------------------------------------------------------------------------------------------------------------------------------------------------------------------------

	<p>To make Casing for your cord,</p> <p>Fold down your Top edge towards the wrong side. Fold a small triangle in the corner As pictured.</p> <p>The red line is your ½ inch seam line, so make sure your triangle sits just inside the seam line.</p> <p>Pin and Stitch close to the bottom edge</p>
-------------------------------------------------------------------------------------	----------------------------------------------------------------------------------------------------------------------------------------------------------------------------------------------------------------------------------------------------------------------------------------------------------------------

PLACEMENT FOR APPLIQUE PATCH

To find the centre (width-wise) of the bag, you need to remember that you have ONE side seam.

So fold your bag in half, then mark a 3/4-inch seam along the side, then fold in half again to that point.



Once you have your halfway width, you can place your Applique Patch in a position you prefer.

The Patch is just under 5 inches high, so I measured up 5 inches from the Contrast band for my centre point (for embroidery alignment)– which meant my Patch finishes 2 ½ inches from the Contrast Band.

EMBROIDERY

I 'float' my fabric on top of the stabiliser, rather than hoop – I find this easier, but by all means hoop your fabric whichever way you choose.

My method is:

- Hoop Tear-away Stabiliser
- Load Odd Socks Design
- Thread machine with a neutral color (We used White)



Using your already marked centre point
Float your fabric over the stabiliser



Stitch Color 1, which is the guideline for your Applique Patch

Place your pellon piece, then your Patch Fabric over the Guideline

Stitch Color 2 to attach



	<p>Change thread to the color you want for your stippling (or skip if you do not want stippling)</p> <p>Stitch Color 3</p>
-----------------------------------------------------------------------------------	----------------------------------------------------------------------------------------------------------------------------

	<p>Stitch Color 4 which gives you the Guideline for your first sock</p>
------------------------------------------------------------------------------------	-------------------------------------------------------------------------

	<p>Place your fabric over the guideline</p> <p>Stitch Color 5 to attach</p>
-------------------------------------------------------------------------------------	-----------------------------------------------------------------------------



Cut away excess fabric from the sock



Change thread color to the color for the sock

Stitch Color 6 which zig zags, then satin stitches around the sock



Change thread color to the color of the second sock

Stitch Color 7 which stitches guideline



Once again, place 2nd fabric over the guideline

Stitch Color 8 to attach

Trim away excess fabric from the second sock



Stitch Color 9 which zig zags then satin stitches around the second sock



Complete embroidery in your chosen Colors

Color 10 – White of Eyes

Color 11 – Black of Eyes

Color 12 – Pegs – Brown

Color 13 - O

Color 14 - D

Color 15 - D

Color 16 -SOCKS

Color 17 -Seeking

Color 18 – Sole Mate



Optional**

I chose to add a backing to our Patch, so the back of the embroidery is completely covered.

You can skip this step, by skipping Color 19

Remove hoop from machine



As pictured,

Tape a 6x8 piece of fabric to the back of the hoop



Return your hoop to machine

In a neutral thread, stitch Color 19 which attaches the backing fabric

Remove hoop from machine



Cut away the excess Fabric on both FRONT and BACK



Change thread to Color you want for
Satin Stitch edge

Stitch Color 20

Embroidery Complete!!



Back of Applique Patch

**Obviously the white is very light, and the embroidery shows through, but if you had a different color (or 2 layers of white), you have a very neat back.

COMPLETE BAG CONSTRUCTION

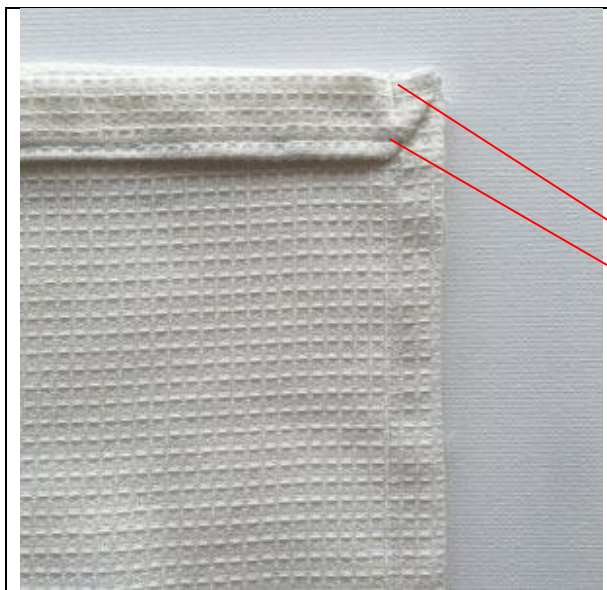
It's pretty simple now, you just need to sew along the side seam, then the bottom seam



I like to do a French seam of the side – I just think it looks neater

To do this, you do the opposite of normal.

You fold fabric in half with wrong-sides together, then stitch along the side edge really close to the edge



Press firmly, then do the usual seam

Fold Fabric with right-sides together and stitch your ½ inch seam

As pictured, you leave a small gap in the side seam at the top – big enough to get a safety pin and cord thru

Now just sew ½ inch seam along the bottom



As pictured, attach one end of your cord to a safety pin, then thread that thru the gap in your casing.

Pull thru to other side

